



Endo-ERN

European Reference Network
on Rare Endocrine Conditions



European
Reference
Network

Contact
Endo-ERN Coordinating Center:
Amsterdam UMC
The Netherlands
info@endo-ern.eu
www.endo-ern.eu

What are European Reference Networks?

European Reference Networks (ERNs) are virtual networks involving Reference Centres across Europe. They aim to tackle complex or rare diseases and conditions that require highly specialised treatment and concentrated knowledge and resources.

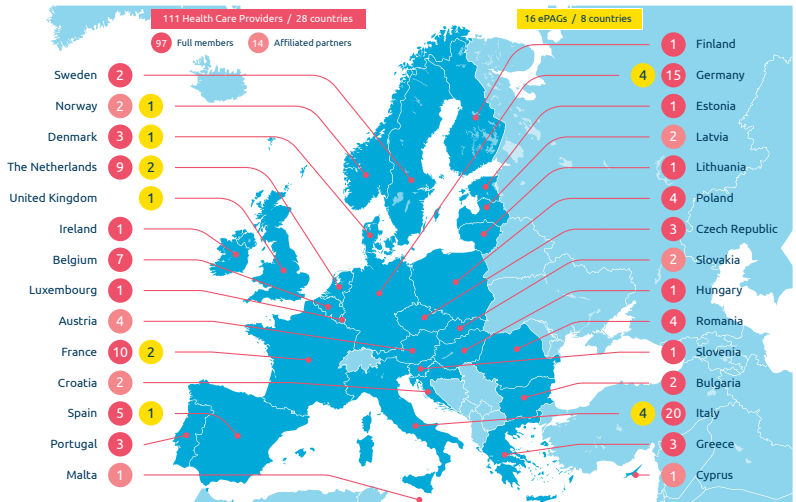
What is Endo-ERN?

Endo-ERN's mission is to reduce and ultimately abolish inequalities in care for patients with rare endocrine conditions in Europe, through facilitating knowledge sharing and related healthcare and research. Endo-ERN provides equality between paediatric and adult patients across the following disease groupings:

- 1 Adrenal
- 2 Disorders of Calcium & Phosphate Homeostasis
- 3 Genetic Disorders of Glucose & Insulin Homeostasis
- 4 Genetic Endocrine Tumour Syndromes
- 5 Growth & Genetic Obesity Syndromes
- 6 Hypothalamic and Pituitary Conditions
- 7 Sex Development & Maturation
- 8 Thyroid

Where can you find us?

Endo-ERN has collaborating reference centres in 28 countries and patient advocacy group representatives (ePAGs) from 8 countries.



Check out www.endo-ern.eu for more information!



Endo-ERN

European Reference Network
on Rare Endocrine Conditions

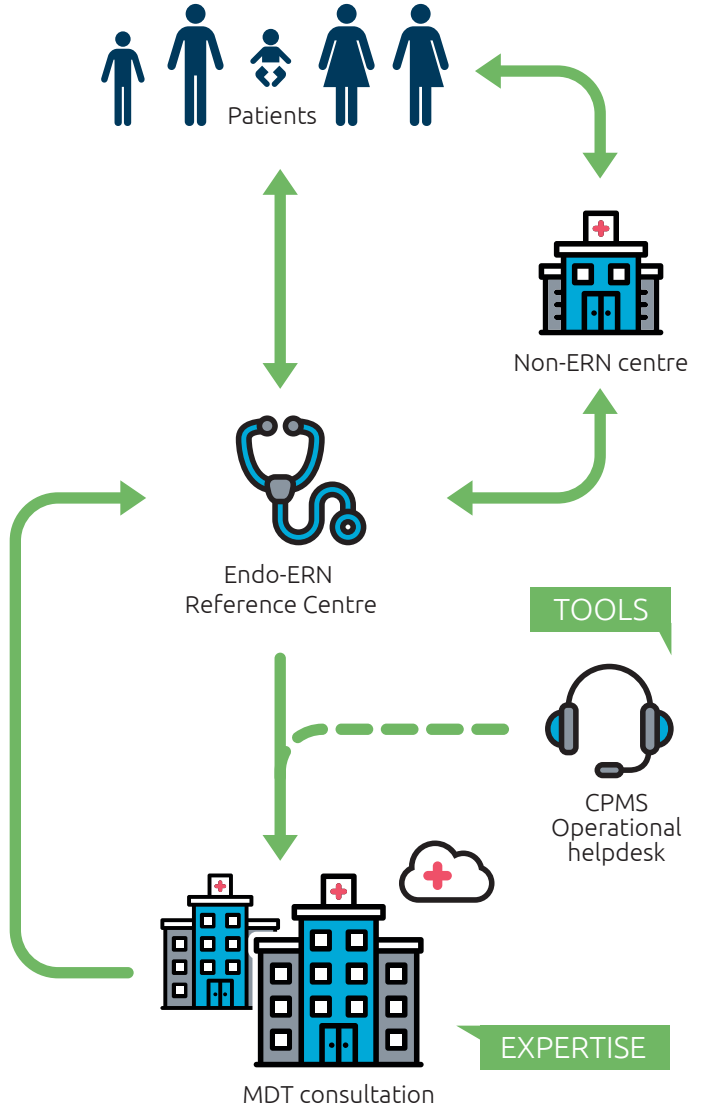


European
Reference
Network

Contact
Endo-ERN Coordinating Center:
Amsterdam UMC
The Netherlands
info@endo-ern.eu
www.endo-ern.eu

Seeking expert opinion?

Via the Clinical Patient Management System (CPMS) any doctor can ask for virtual consultation of Endo-ERN reference centres. This IT platform enables a multidisciplinary team (MDT) to discuss highly specialised patient cases in a secure closed-off environment. The resulting advice can then be directly referred back to the patient by their own treating physician.



Check out www.endo-ern.eu for more information!