



Endo-ERN

European Reference Network
on Rare Endocrine Conditions



European
Reference
Network

Contact
Endo-ERN Coordinating Center:
Leiden University Medical Center
The Netherlands
info@endo-ern.eu
www.endo-ern.eu

What are European Reference Networks?

European Reference Networks (ERNs) are virtual networks involving Reference Centers across Europe. They aim to tackle complex or rare diseases and conditions that require highly specialised treatment and concentrated knowledge and resources.

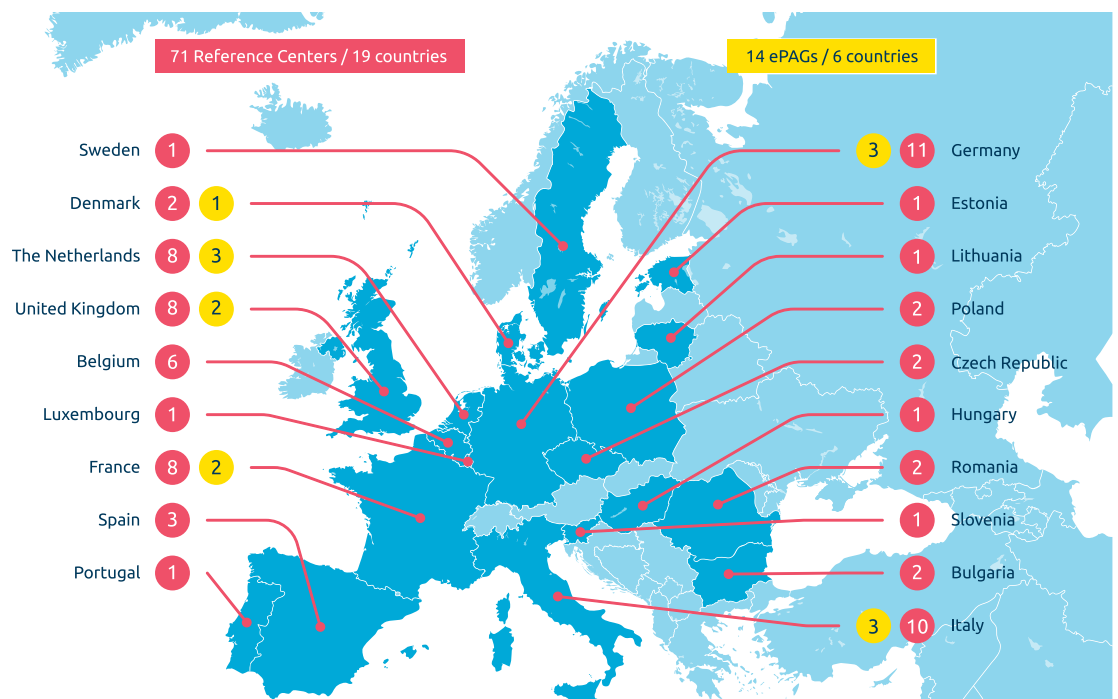
What is Endo-ERN?

Endo-ERN's mission is to reduce and ultimately abolish inequalities in care for patients with rare endocrine conditions in Europe, through facilitating knowledge sharing and related healthcare and research. Endo-ERN provides equality between paediatric and adult patients across the following disease groupings:

- 1 Adrenal
- 2 Disorders of Calcium & Phosphate Homeostasis
- 3 Genetic Disorders of Glucose & Insulin Homeostasis
- 4 Genetic Endocrine Tumour Syndromes
- 5 Growth & Genetic Obesity Syndromes
- 6 Pituitary
- 7 Sex Development & Maturation
- 8 Thyroid

Where can you find us?

Endo-ERN has collaborating reference centers in 19 countries and patient advocacy group representatives (ePAGs) from 6 countries.



Check out www.endo-ern.eu for more information!



Endo-ERN

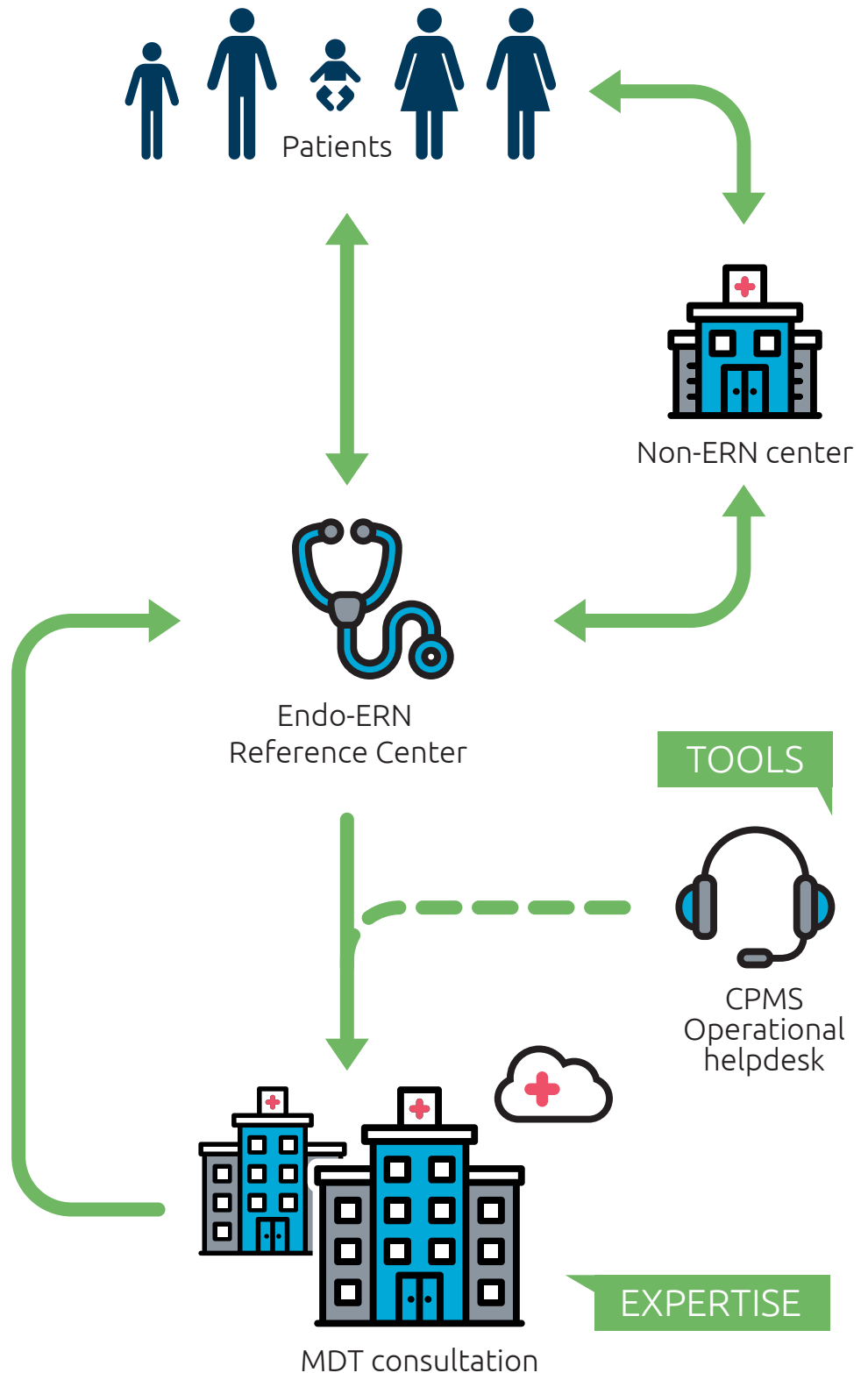
European Reference Network
on Rare Endocrine Conditions



Contact
Endo-ERN Coordinating Center:
Leiden University Medical Center
The Netherlands
info@endo-ern.eu
www.endo-ern.eu

Seeking expert opinion?

Via the Clinical Patient Management System (CPMS) any doctor can ask for virtual consultation of Endo-ERN reference centers. This IT platform will enable a multidisciplinary team (MDT) to discuss highly specialised patient cases in a secure closed-off environment. The resulting advice can then be directly referred back to the patient by their own treating physician.



Check out www.endo-ern.eu for more information!